

Appendix 5 – Images of the site and proposed scheme



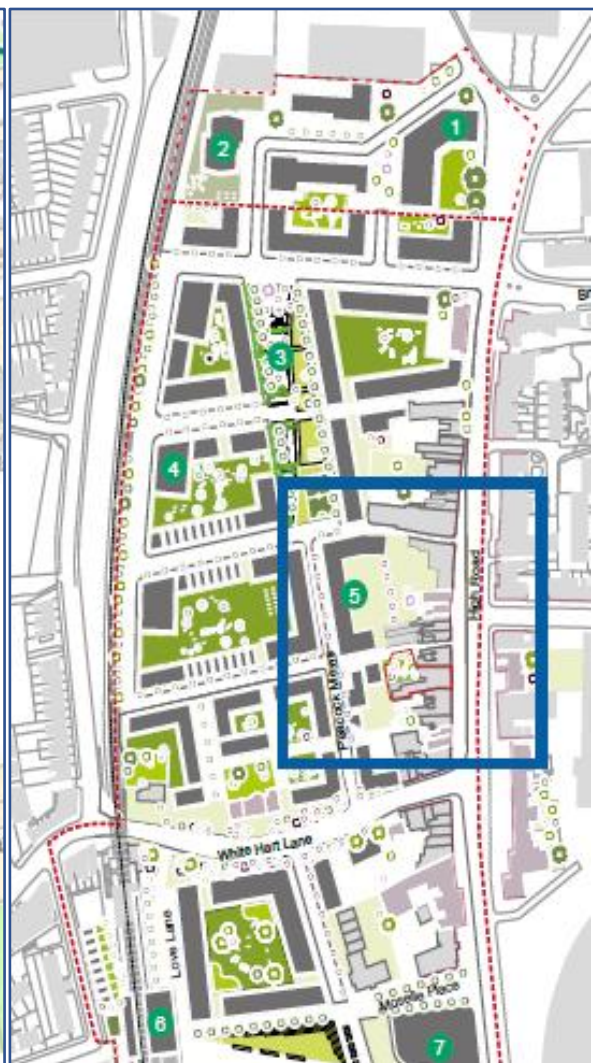
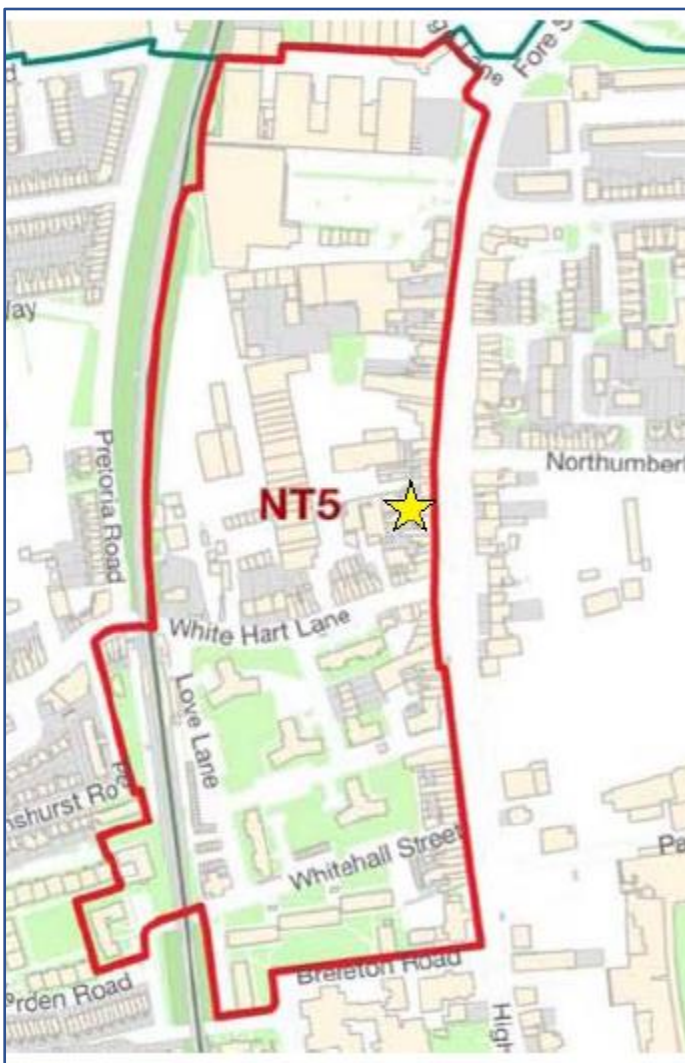
The site – frontages on to High Road and Percival Court



Existing High Road frontage



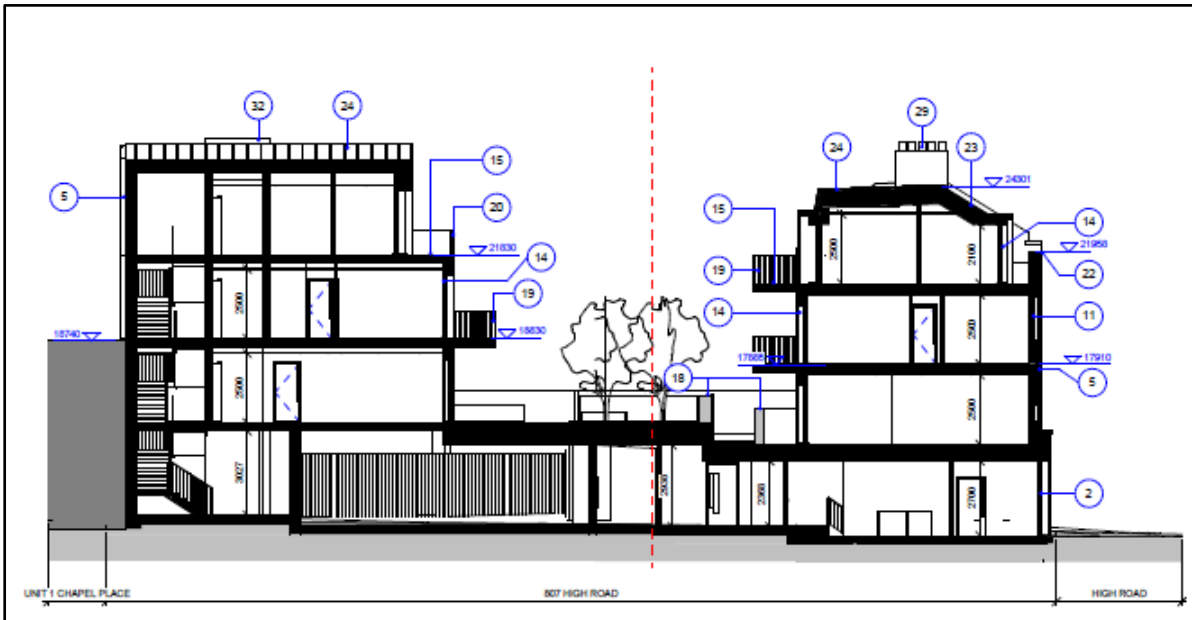
Existing Percival Court frontage



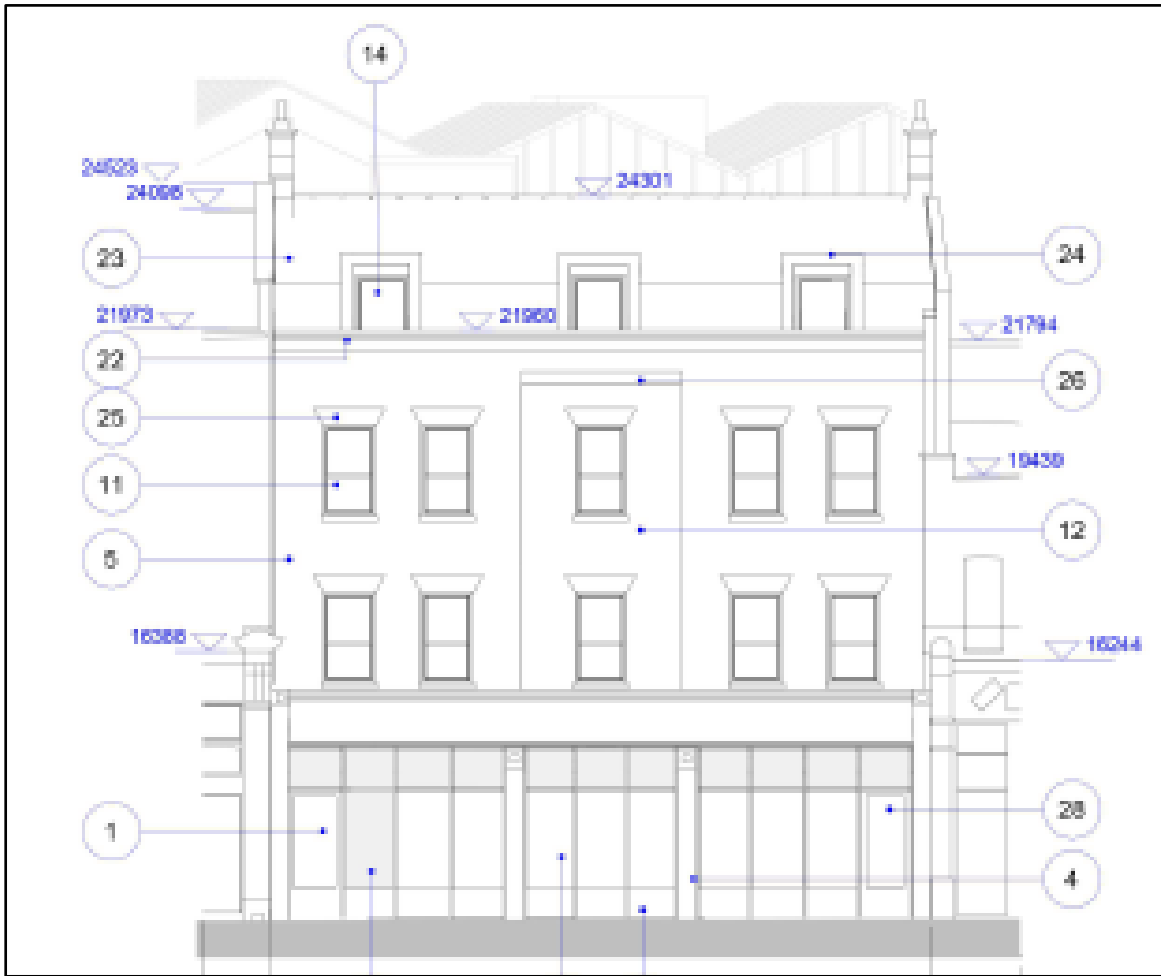
Site Allocation NT5 (site identified by ) and site in High Road West Masterplan Framework Area



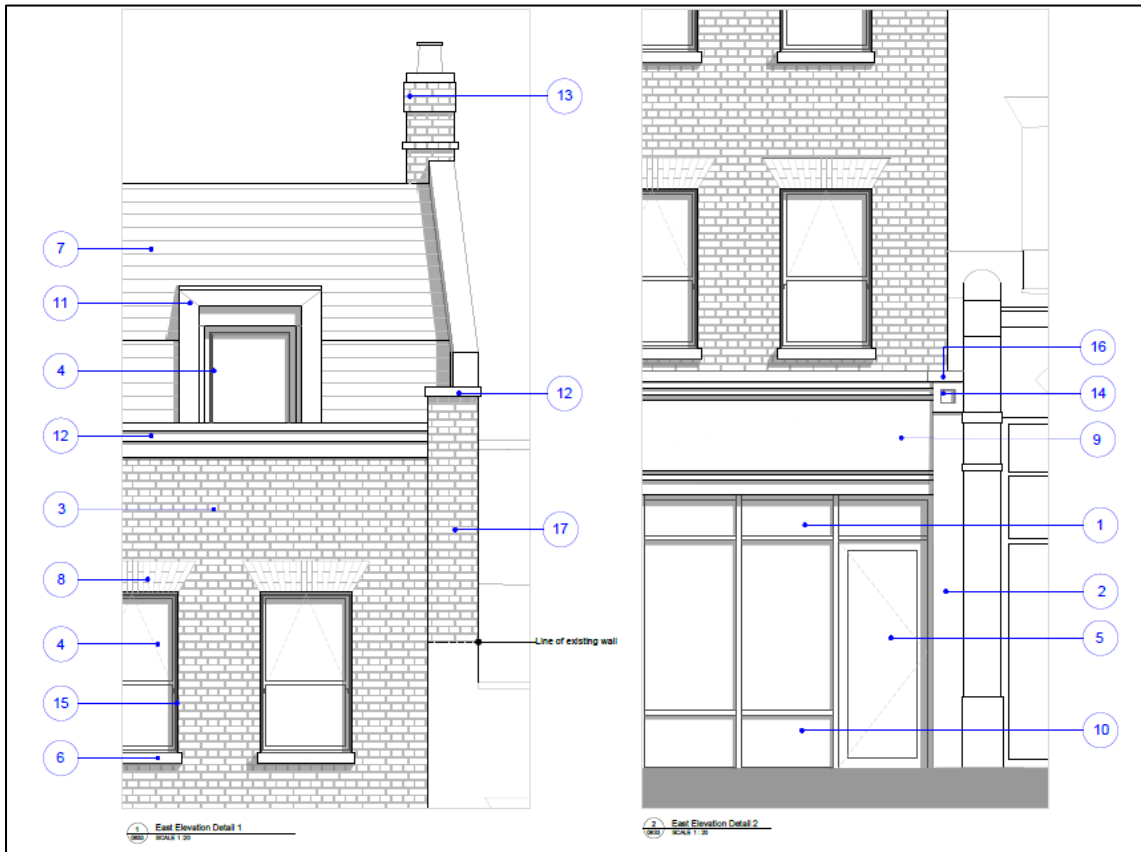
Proposed 3rd floor plan



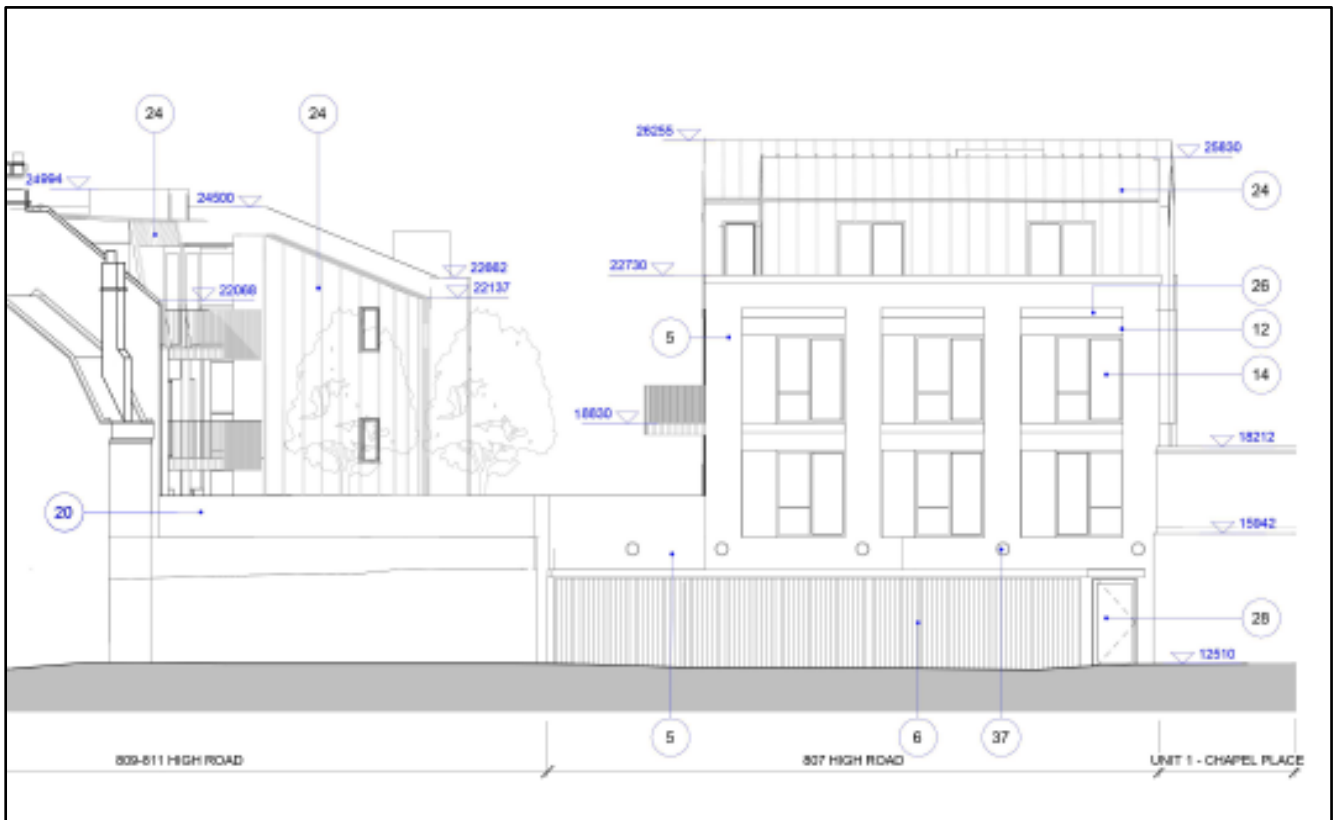
Proposed section – Block A (fronting High Road) on right and Block B on the left



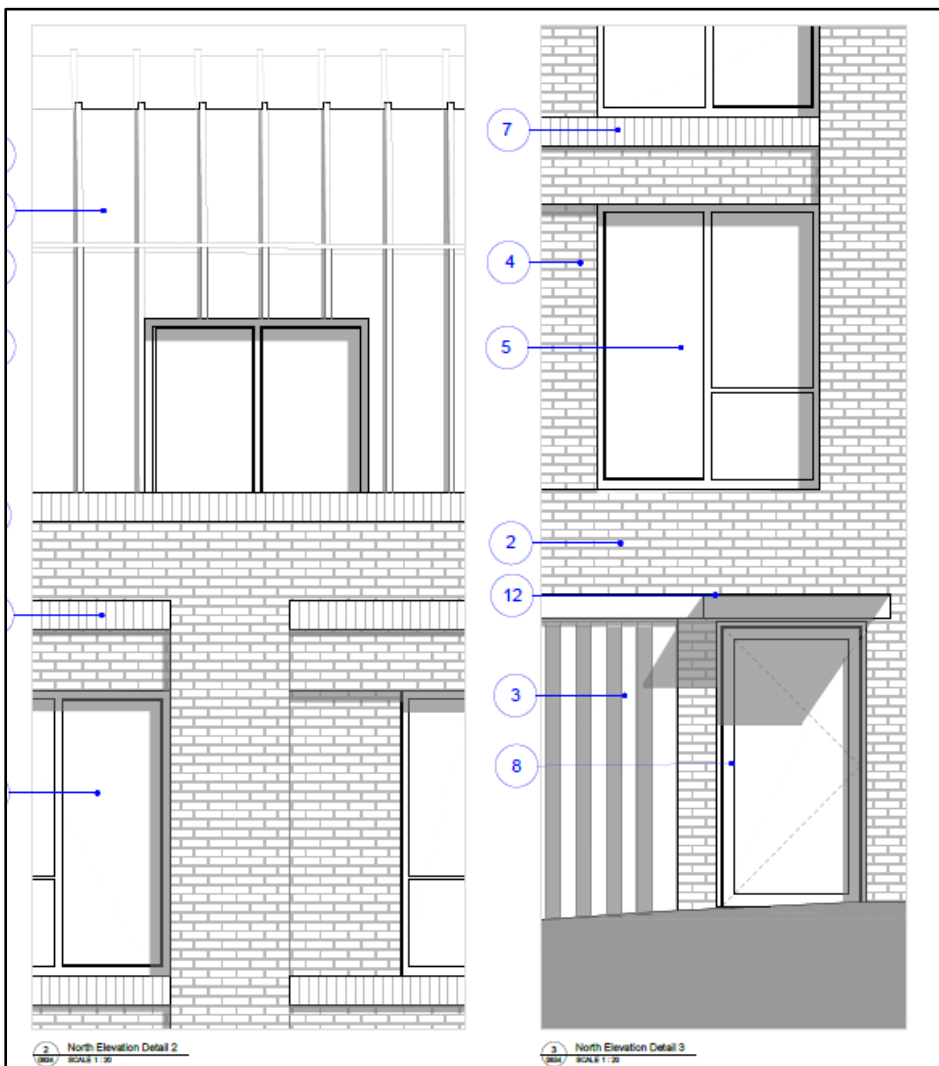
Block A – High Road frontage



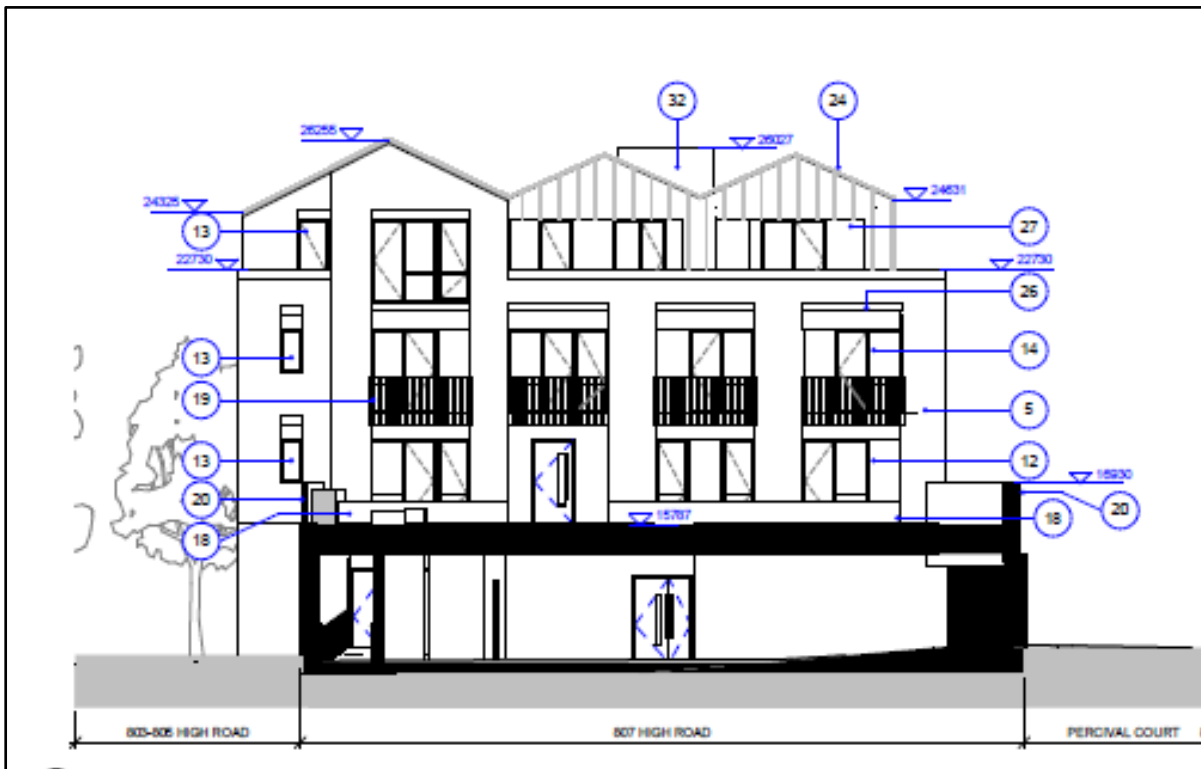
Block A – High Road frontage details



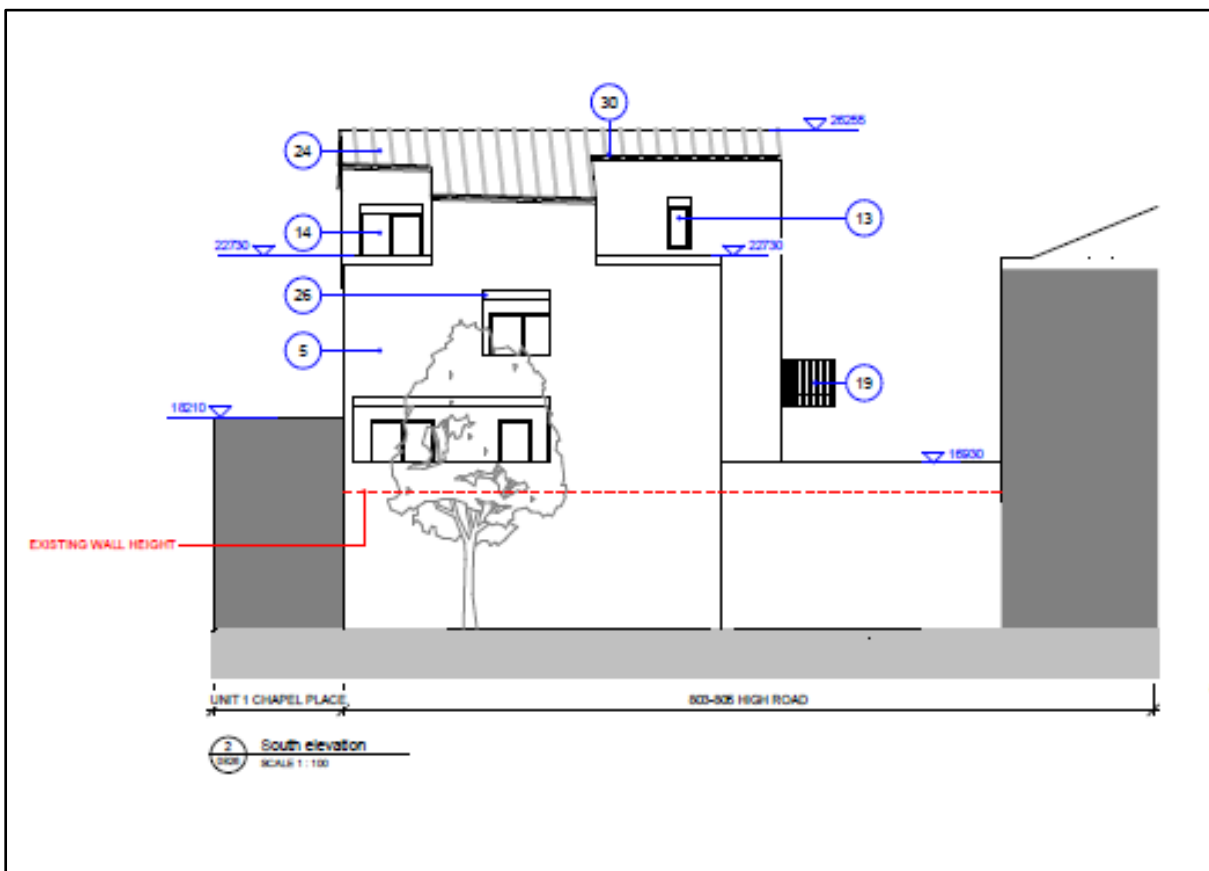
Blocks A and B – Percival Court frontage



Block B Percival Court – detail



Block B western elevation (facing rear of Block A)



Block B southern elevation (facing the Bricklayers Arms PH garden)



1 Existing Photograph
SCALE: 1:100



2 Proposed Development View
SCALE: 1:100

High Road frontage – photomontage showing existing and proposed (looking south from junction with Northumberland Park)

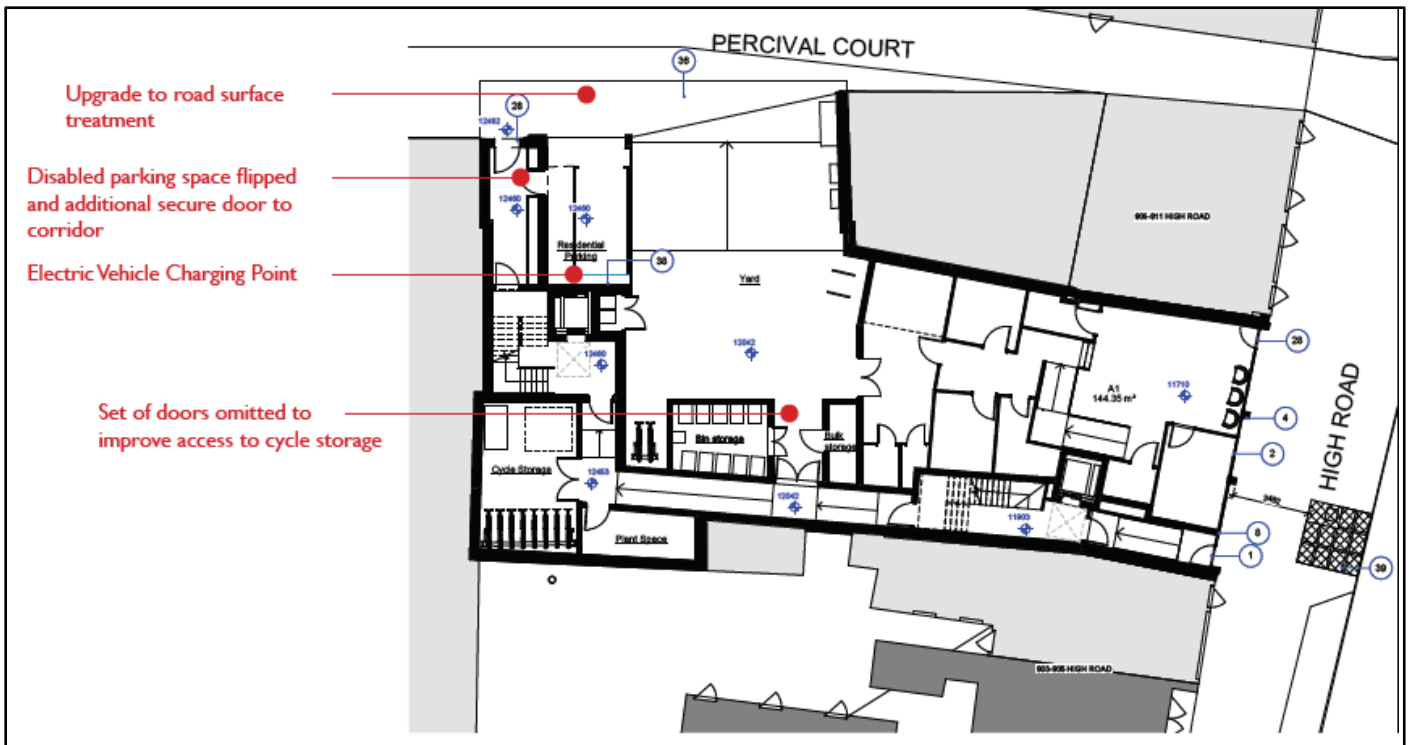


1 Existing Photograph
SCALE: 1:75

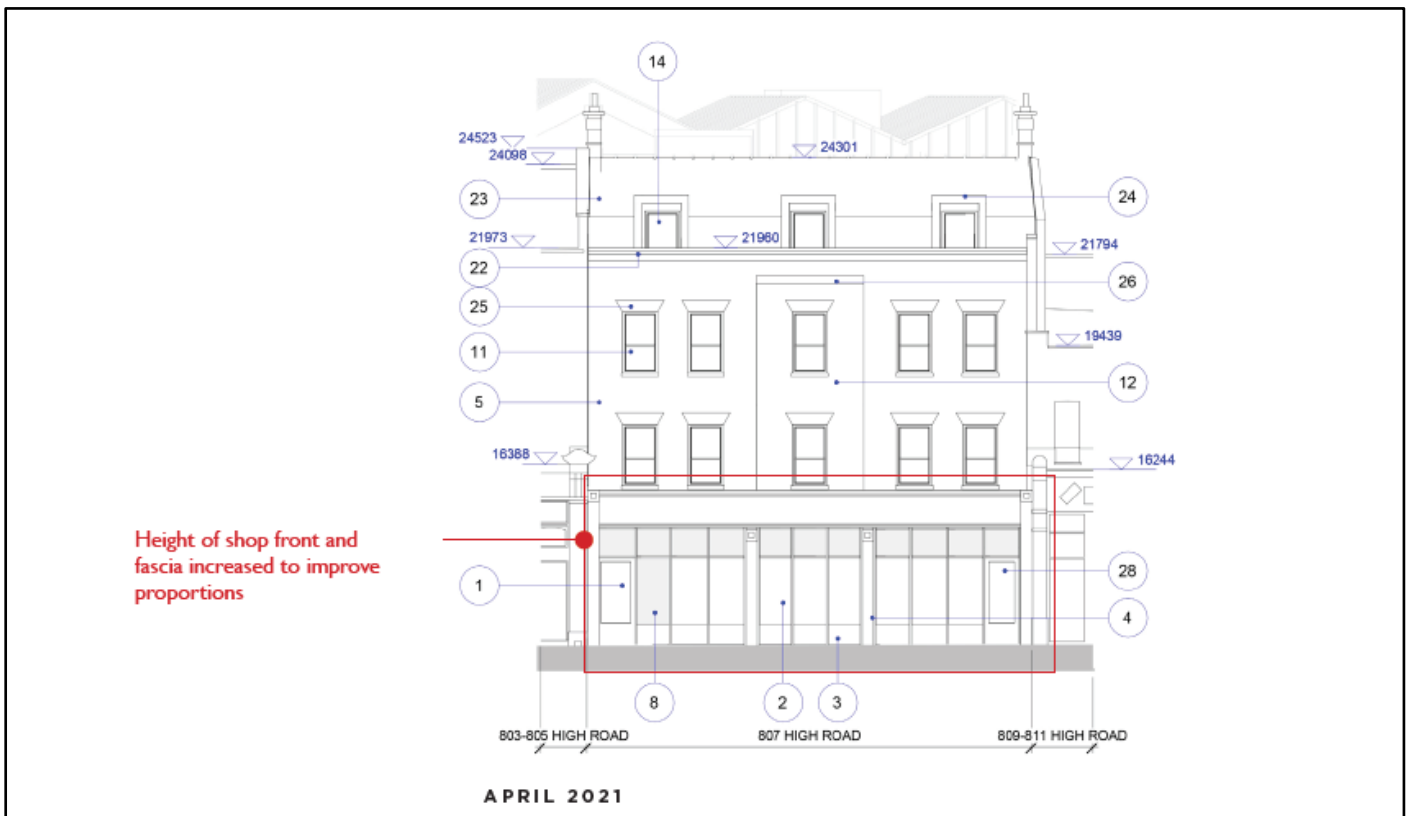


2 Proposed Development View
SCALE: 1:75

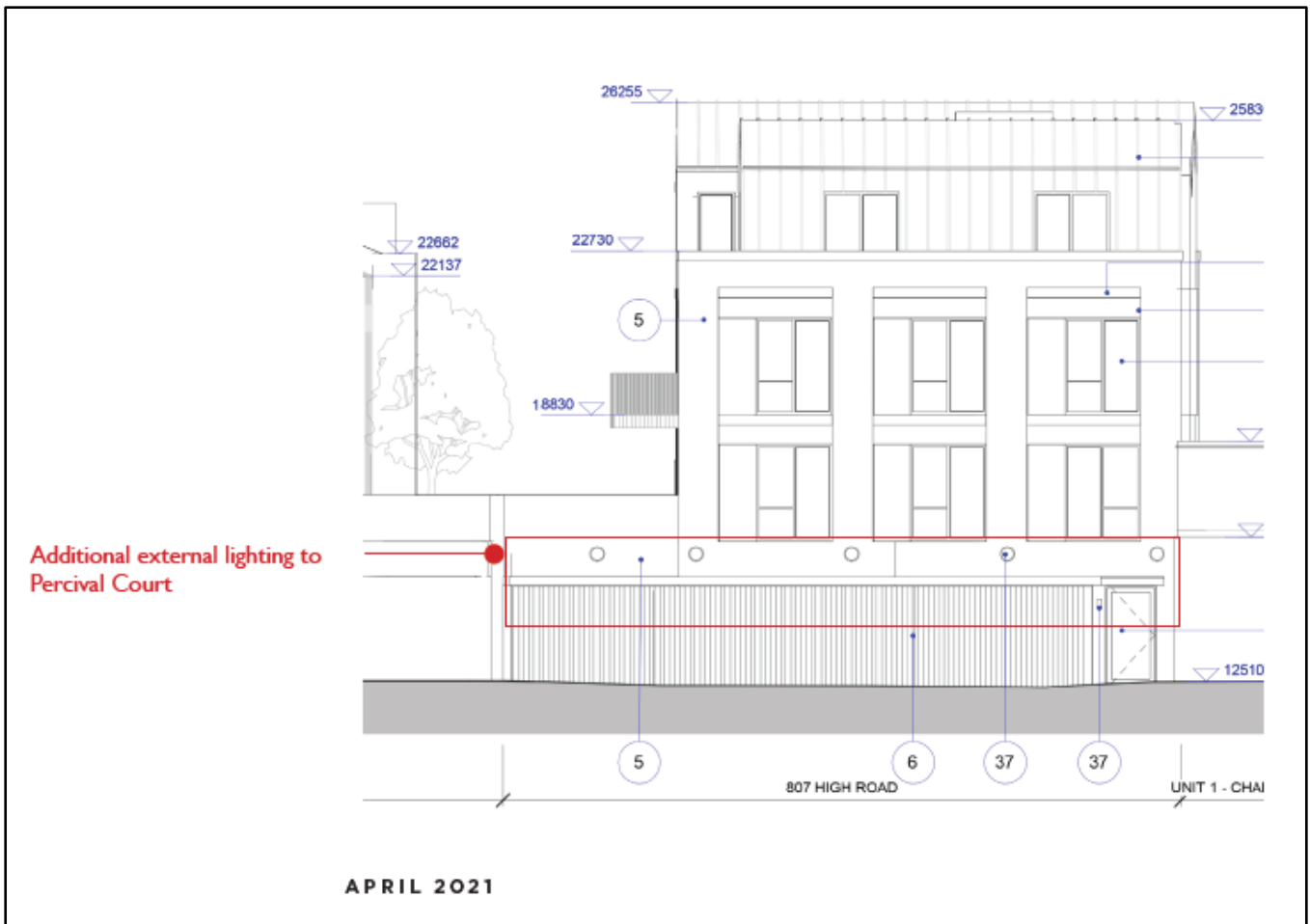
High Road frontage – photomontage showing existing and proposed (looking north up High Road)



Ground floor plan – changes from earlier application scheme



High Road elevation – changes from earlier application scheme



Percival Court elevation – changes from earlier application scheme